

Bracknell Forest
Safeguarding Children's Board
(bflscb.org.uk)

Safeguarding Children
& Young People

Jonathan Picken
Business Manager





HM Government

Working together to safeguard children

A guide to inter-agency working to safeguard and promote the welfare of children

March 2015



Children Act 2004

CHAPTER 31

CONTENTS

PART 1

CHILDREN'S COMMISSIONER

- 1 Establishment
- 2 General function
- 3 Inquiries initiated by Commissioner
- 4 Other inquiries held by Commissioner
- 5 Functions of Commissioner in Wales
- 6 Functions of Commissioner in Scotland
- 7 Functions of Commissioner in Northern Ireland
- 8 Annual reports
- 9 Care leavers and young persons with learning disabilities

PART 2

CHILDREN'S SERVICES IN ENGLAND

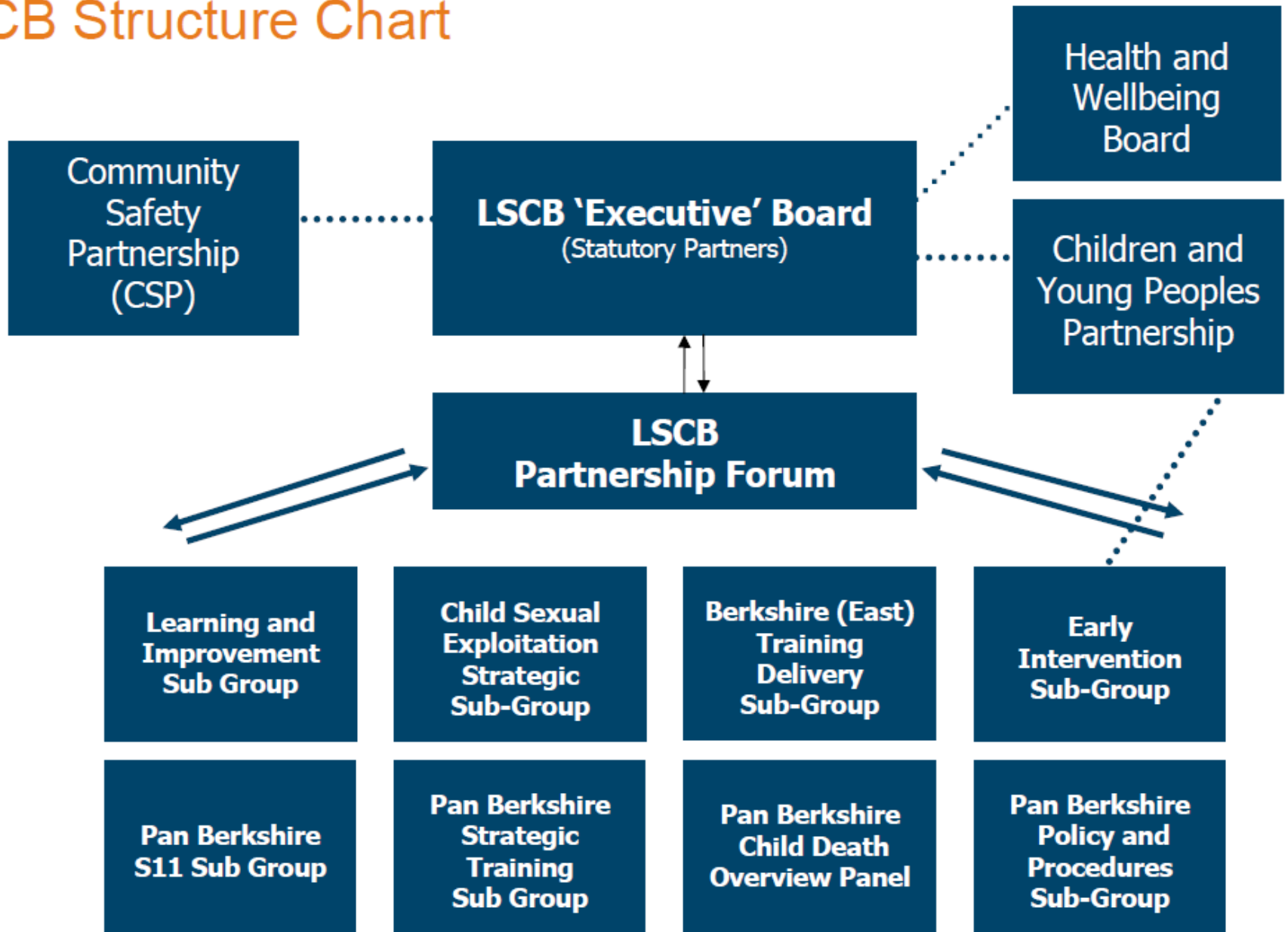
General

- 10 Co-operation to improve well-being
- 11 Arrangements to safeguard and promote welfare
- 12 Information databases

Local Safeguarding Children Boards

- 13 Establishment of LSCBs
- 14 Functions and procedure of LSCBs
- 15 Funding of LSCBs
- 16 LSCBs: supplementary

LSCB Structure Chart



The LSCB is the key regulatory mechanisms for agreeing how the statutory partners will co-operate to safeguard and promote the welfare of children in its locality. (Working Together 2013)

Its core objectives include:

- the **co-ordination** of what is done by each person or body represented on the Board to safeguard and promote the welfare of children;

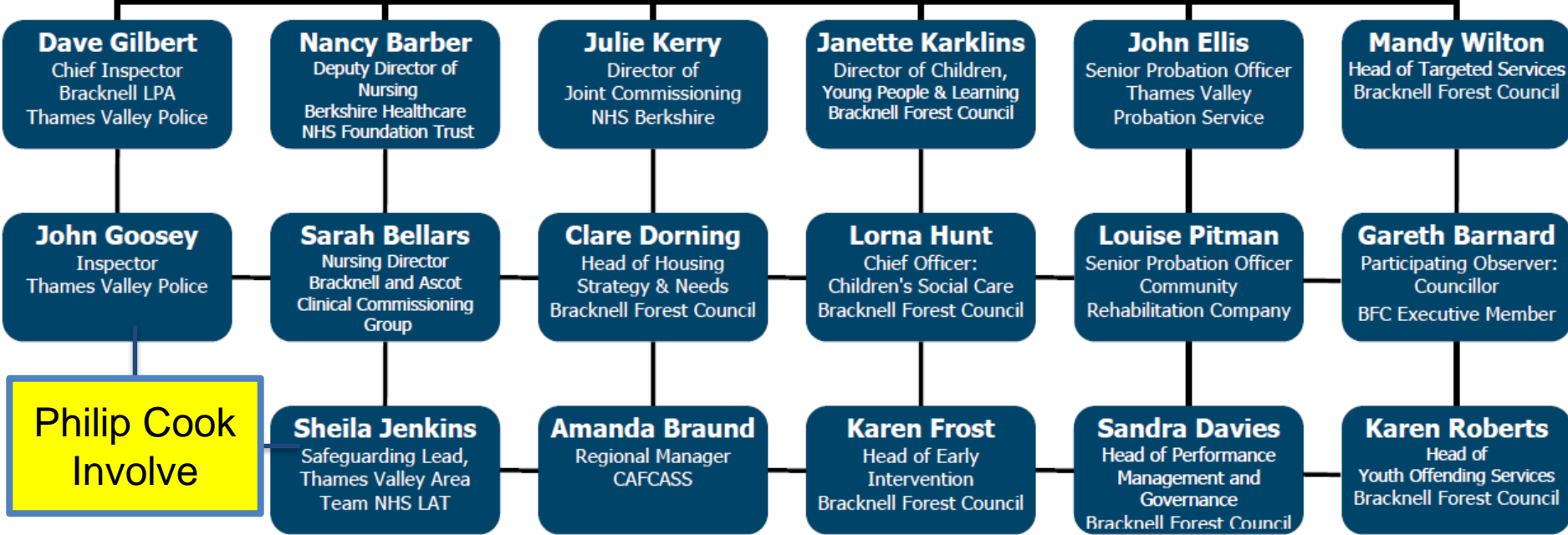
and

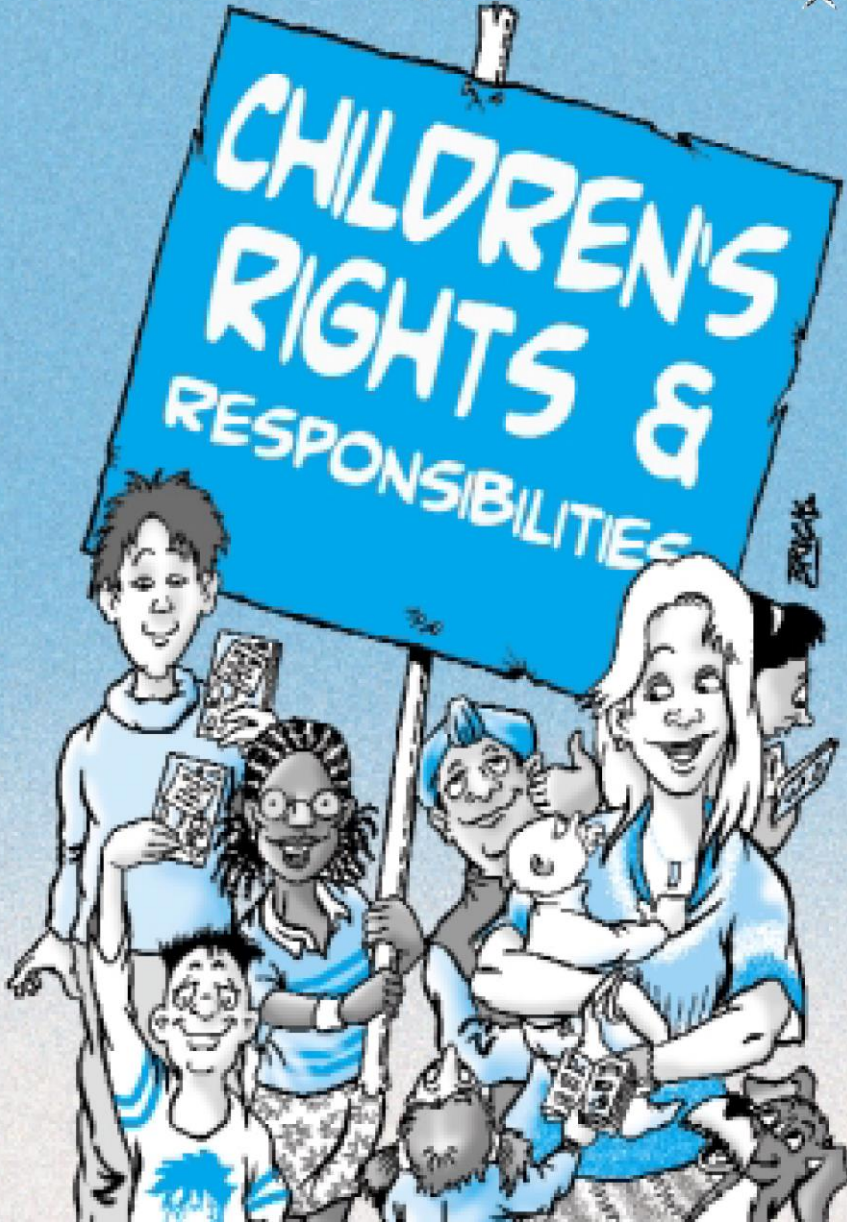
- ensure the **effectiveness** of what is done by each such person or body for those purposes (s14(1) Children Act 2004)



Bracknell Forest LSCB Board

Alex Walters
Independent
Chair





UN Convention on the Rights of the Child (UNCRC)

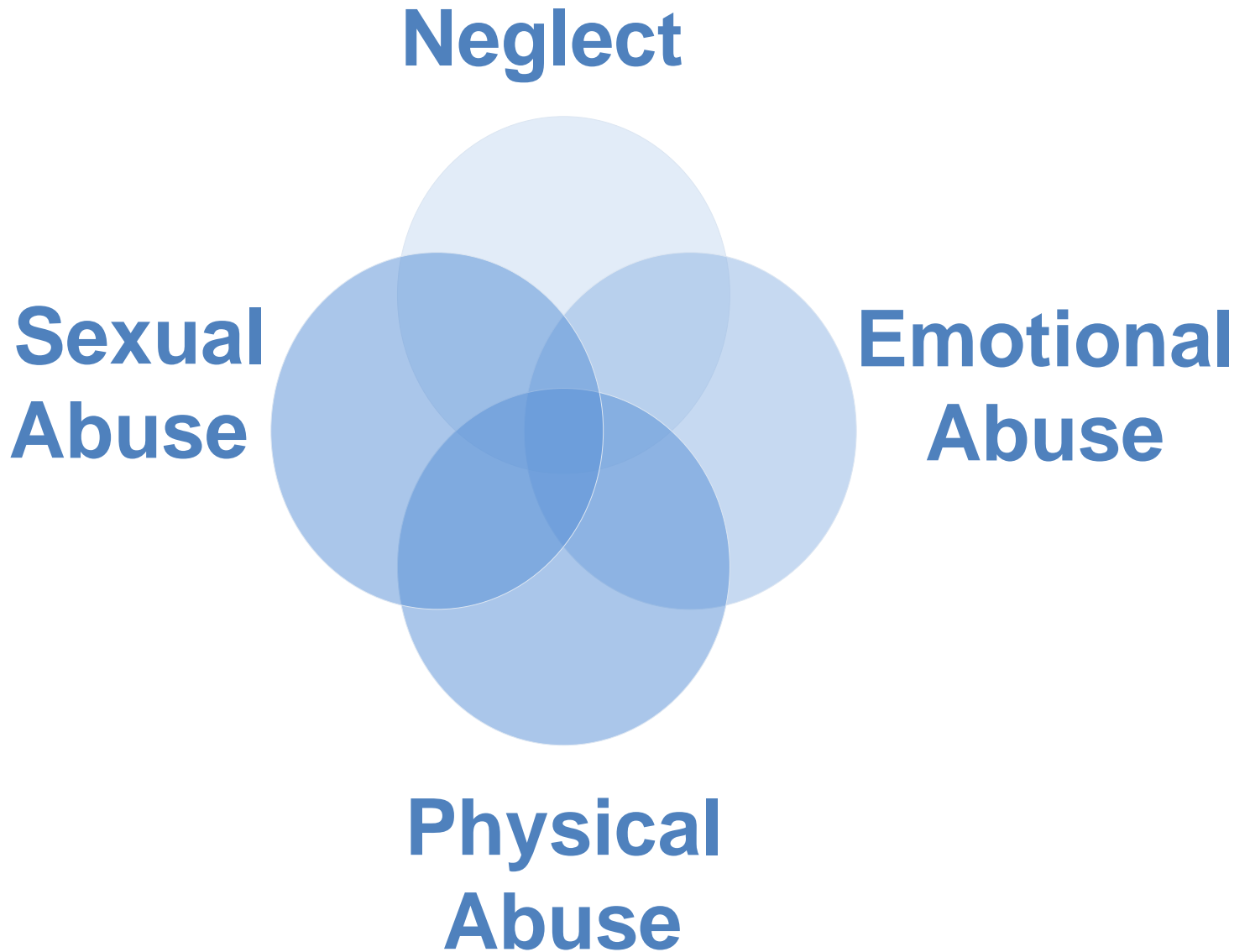
*Adopted by the United Nations General
Assembly on 20 November 1989.*

The Convention has been ratified by 192 out of 193 countries, territories and states, making it a truly global bill of rights

The Convention has 54 articles in all. Articles 43-54 are about how adults and Governments should work together to make sure all children get all their rights.

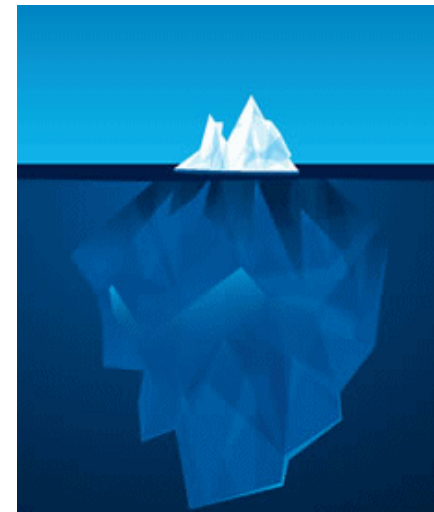
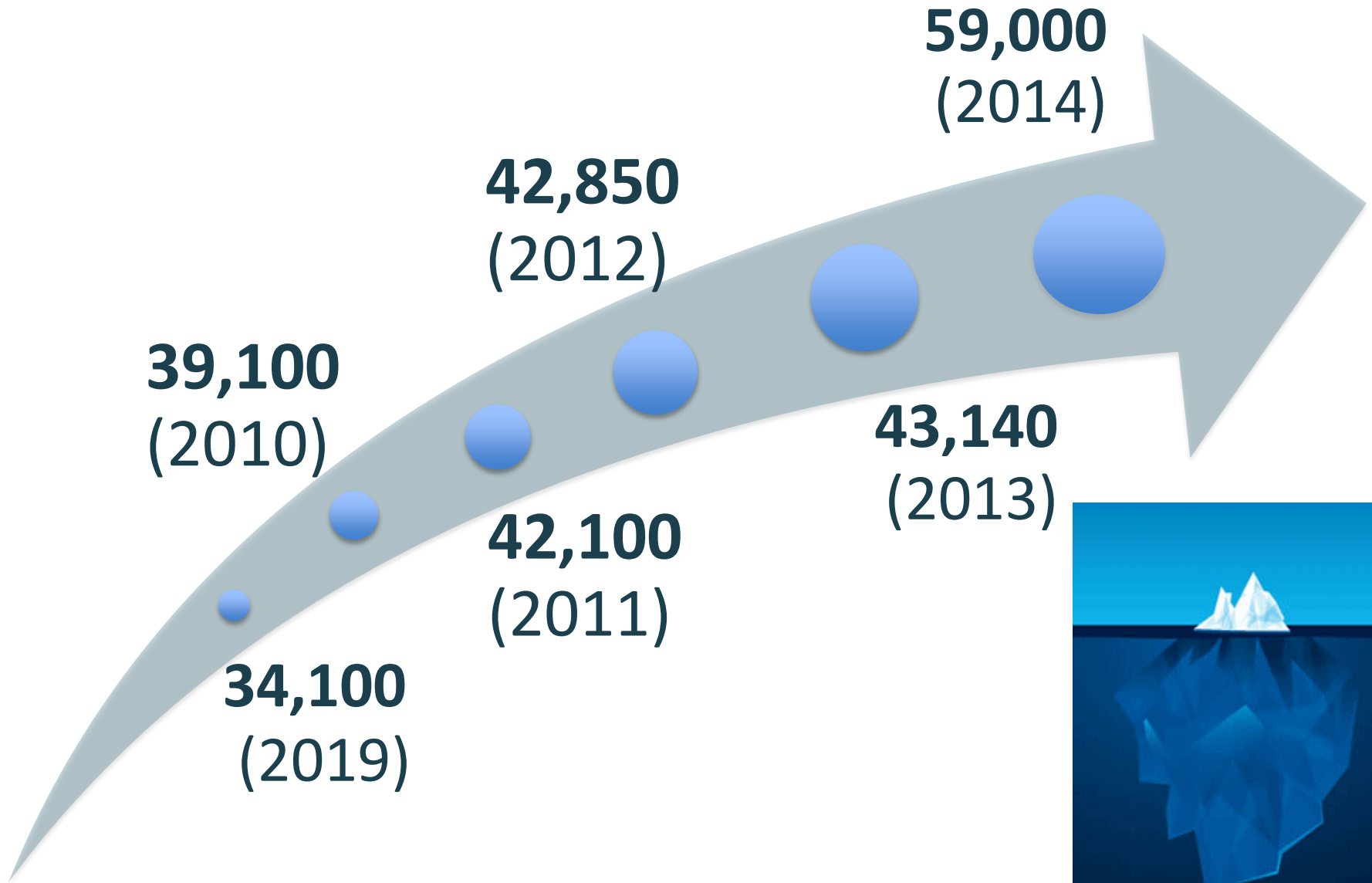
The United Kingdom of Great Britain and Northern Ireland ratified the Convention on the Rights of the Child on 16th December 1991, requiring 'Government' to ensure that every child has all the rights in the Convention.

Core Business

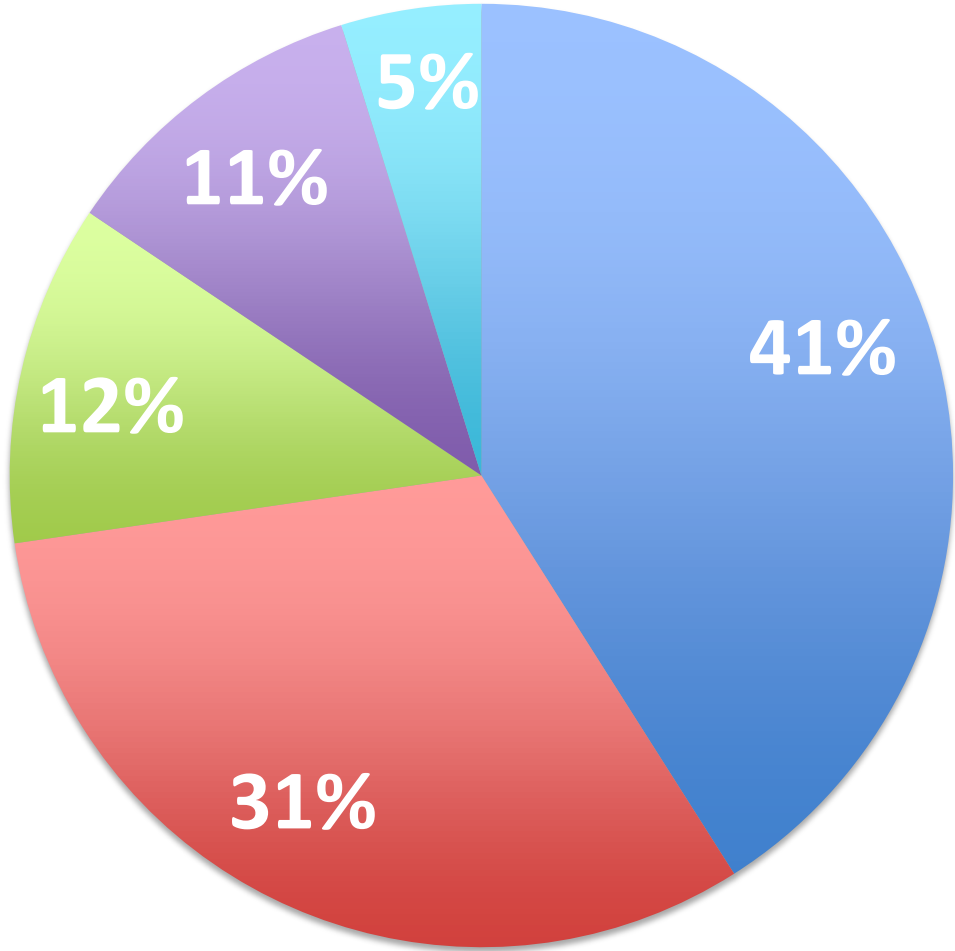


**What is the scale of the problem
across the country ?**

Child Protection Plans (England)



Category of Child Protection Plans (England)



- Neglect
- Emotional Abuse
- Physical Abuse
- Multiple
- Sexual Abuse

DISABLED CHILDREN

Disabled children are:

3.4 times more likely to be abused

3.8 times more likely to be neglected

3.8 times more likely to be physically abused

3.1 times more likely to be sexually abused

3.9 times more likely to be emotionally abused

DCSF, 2008



Key findings - Severe maltreatment

- **One in four young adults (25.3%) had been severely maltreated during childhood**
- **Around one in five (18.6%) children aged 11-17 have been severely maltreated**
- **One in seven young adults (14.5%) had been severely maltreated by a parent or guardian during childhood**

Child abuse and neglect in the UK today

NSPCC/Radford et al, 2011: 1,761 young adults aged 18-24 years;
2,275 children aged 11-17 years and 2,160 parents of children aged under 11

Key findings - Physical violence

- **One in nine young adults (11.5%) had experienced severe physical violence during childhood at the hands of an adult**
- **One in 14 children aged 11-17 (6.9%) have experienced severe physical violence at the hands of an adult**

Key findings - Neglect

- **Neglect was the most prevalent type of maltreatment in the family for all age groups**
- **One in six young adults (16%) had been neglected at some point in their childhoods and nearly one in ten (9%) had experienced severe neglect**
- **One in seven children aged 11-17 (13.3%) have been neglected. Almost one in ten (9.8%) have experienced severe neglect**

Key Findings - Emotional abuse

- **One in 14 young adults (6.9%) experienced emotional abuse during childhood**
- **One in 14 children aged 11-17 (6.8%) have experienced emotional abuse**

Key Findings – Experience of domestic abuse

- **Nearly one in four young adults (23.7%) were exposed to domestic violence between adults in their homes during childhood**
- **Just under one in five children aged 11-17 (17.5%) have experienced domestic violence between adults in their homes**

Key findings - Sexual abuse

- **Nearly a quarter of young adults (24.1%) experienced sexual abuse (including contact and non-contact) by an adult or by a peer during childhood**
- **One in six children aged 11-17 (16.5%) have experienced sexual abuse**
- **Almost one in 10 children aged 11-17 (9.4%) have experienced sexual abuse in the past year. Teenage girls aged between 15 and 17 years reported the highest past year rates of sexual abuse**



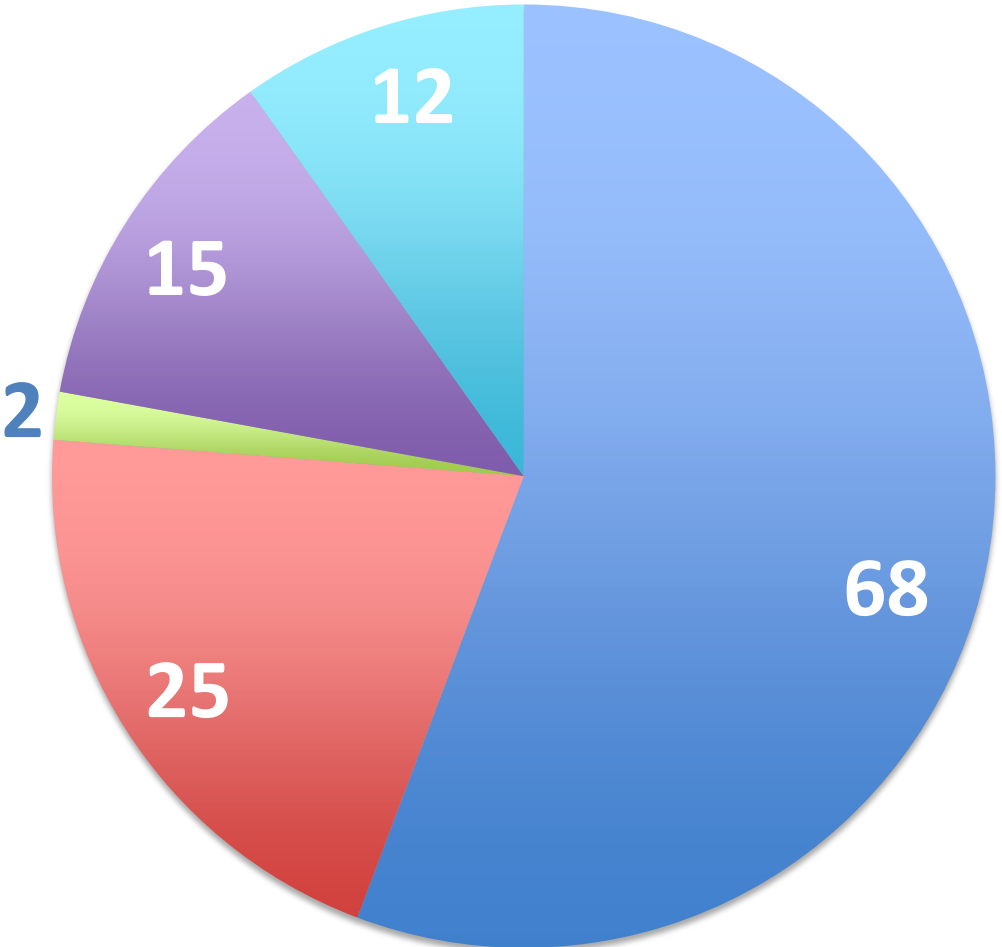
Which is the offender?

Key Findings - Disclosure

- **More than one in five children aged 11-17 (22.9%) who were physically hurt by a parent or guardian did not tell anyone else about it**
- **More than one in three children aged 11-17 (34%) who experienced contact sexual abuse by an adult did not tell anyone else about it**
- **Four out of five children aged 11-17 (82.7%) who experienced contact sexual abuse from a peer did not tell anyone else about it**

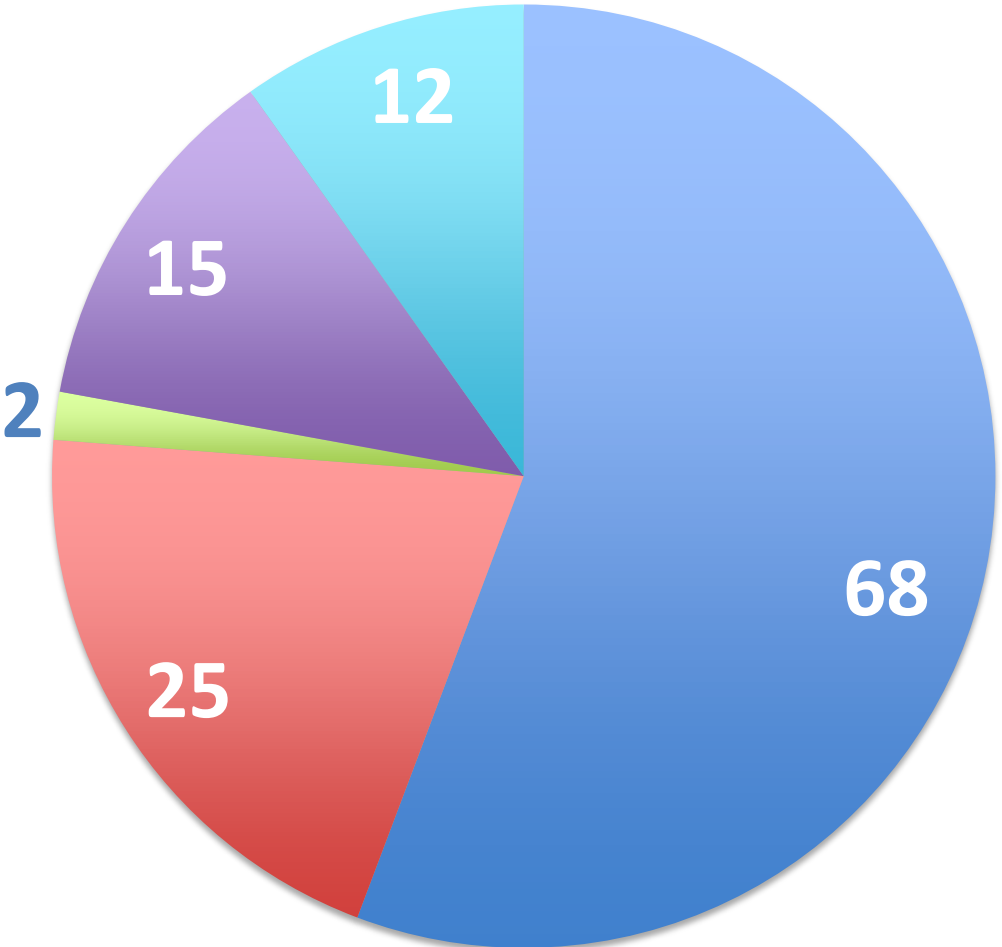
**What is the scale of the problem
across the Borough ?**

Category of Child Protection Plans (Bracknell)



- Neglect
- Emotional Abuse
- Physical Abuse
- Multiple
- Sexual Abuse

Category of Child Protection Plans (Bracknell)



- Neglect
- Emotional Abuse
- Physical Abuse
- Multiple
- Sexual Abuse



LSCB Key Priorities 2014-2017

- To support further implementation of the framework for **early help**, and evaluate its impact on families
- Reduce the impact of **domestic abuse** on children, young people and families
- Reduce the impact of **substance and alcohol misuse** on children, young people and families
- Reduce the impact of parental **mental illness** on children and young people
- To further develop the co-ordination of protection and support to young people at risk of **child sexual exploitation**
- To increase the understanding of the harm associated with the **misuse of technologies, it links with bullying** and the further development of proactive strategies to support children / young people and their families
- Develop a greater understanding of **neglect** and reduce the impact this has on children, young people and families

Learning from Serious Case Reviews

**Drug /
Alcohol Misuse**

**Domestic
Abuse**

**Key Common Themes
- *Parents***

**Mental Health
Problems / Illness**

**Parental
Learning Impairment**

Bracknell Forest Local Safeguarding Children Board



About the
board



Professionals



Training



Parents and
Carers



Young
People



Links and
publications

Bracknell Forest Local Safeguarding Children Board

The Bracknell Forest Local Safeguarding Children Board (LSCB) is a dynamic partnership that has responsibility for working together to oversee the safety and well-being of children and young people in Bracknell Forest.

What is safeguarding?

Everyone has a responsibility for safeguarding children. Every child can be hurt, put at risk of harm or abused, regardless of their age, gender, religion or ethnicity. Safeguarding legislation and government guidance says that safeguarding means:

- protecting children from maltreatment
- preventing impairment of children's health or development

Child protection procedures

Find out more about
the Berkshire LSCB child
protection procedures.

[Berkshire LSCB Child
protection procedures](#)

Report a concern

 01344 352020

Find out more about
how to report your
concerns about a
child

Key learning

Take a look at the learning opportunities available for professionals.

[View learning opportunities](#)



Information Sharing: Guidance for practitioners and managers

Seven **golden rules** for information sharing

1. Data Protection Act is not a barrier
2. Be open and honest
3. If in doubt seek advice
4. Share with consent 'where appropriate'
5. Consider safety and well-being
6. Ensure it is necessary, proportionate, relevant, accurate, timely & Secure
7. Keep a record

Online information and guidance for Children, Parents and Professionals



Bracknell Forest Local Safeguarding Children Board

Sexual abuse and exploitation

Child sexual abuse

Sexual abuse (also referred to as sexual assault) can be experienced by anyone. When a child experiences sexual assault, it is commonly referred to as child sexual abuse. Many adult survivors have found common factors in their experiences, including:

- They were usually abused by someone they know
- The abuse often started when they were very young
- The abuse was generally not an isolated one-off incident and happened over many months or years
- The abuse was often accompanied by threats and verbal, or emotional abuse, and sometimes physical violence

[Parents Protect](#) is a dedicated child sexual abuse prevention and awareness website to help caring adults to do just this. The site is a useful resource providing [information](#), [guidance](#) and [resources](#).

It also offers an [online learning programme](#) enabling you to learn about the issues at your own pace and aims to:

In this section:

Reporting concerns

Protecting your child

Domestic abuse

Drug and alcohol misuse

Sexual abuse and
exploitation

Bullying

Emotional abuse and neglect

Staying safe online

Access to 'E' Learning and professionals development

Parents Protect!

Together we can prevent child sexual abuse

For confidential information and advice contact the Stop it Now! helpline on

0808 1000 900

[Home](#)[Learn](#)[Get Help](#)[Take Action](#)[Internet Safety](#)[Resources](#)[Useful Links](#)[About](#)[LEARNING PROGRAMME](#)[DONATE NOW](#)

Quick Navigation

[What is child sexual abuse?](#)[Quick Facts](#)[Warning signs - What to look for in children and adults](#)[Creating a family safety plan](#)

The Parents Protect! Child Sexual Abuse Video Learning Programme

This child sexual abuse awareness video enables you to work through a number of issues and topics at your own pace. The Programme aims to:

Give you the information you need about child sexual abuse

Show you how to create a [family safety plan](#)

Tell you who you can talk to if you are worried

This video is just over 29 minutes long and will give you a good understanding of some of the key issues around child sexual abuse:- what it is, why it happens and crucially, how it can be prevented.

It is vital viewing for all protective adults who want to do the best they can to protect children. One parent said: "The learning programme was very clear, not scaremongering but giving enough information to enable parents to equip their children and themselves simply to reduce risks generally. It's positive, not scaring children with talk of offenders or strangers!" Please do have a watch by clicking the video below.

You can contact the [Stop it Now! Helpline or e-mail service](#) if you have any questions at any point, as you work through the Programme.

Our resources are free to download, and we want to continue to provide free information and



**Bracknell Forest
Safeguarding Children's Board**
(bflscb.org.uk)

Thank you



@bflscb

